

# VT-M2M-DTU-LoRa

## Industrial DTU



### Product Brief

VT-M2M-DTU-LoRa is an entry-level data transmission unit (DTU) that leverages LoRa spread spectrum modulation technology that features high sensitivity for long-range, reliable wireless data transmission while consuming less than 3W of power under load.

VT-M2M-DTU-LoRa provides a reliable and efficient way to connect field devices to a central network. Field data from sensors or actuators is transmitted to the device via the RS232 or RS485 serial port. Such data is then transmitted through a LoRa gateway and finally received by a LoRa network server. This enables real-time monitoring and status tracking of field devices.

With a compact form factor and flexible deployment options, VT-M2M-DTU-LoRa simplifies installation and maintenance for users. Additionally, it supports 9V~36V wide input voltage and operates at an industrial-grade extended temperature range from -20°C to +70°C, making it an optimal solution for industries such as smart agriculture, smart city, and smart logistics. Typical application of the device includes temperature and humidity control, hazardous air and water flow monitoring, and cargo tracking.

### Exterior and Features

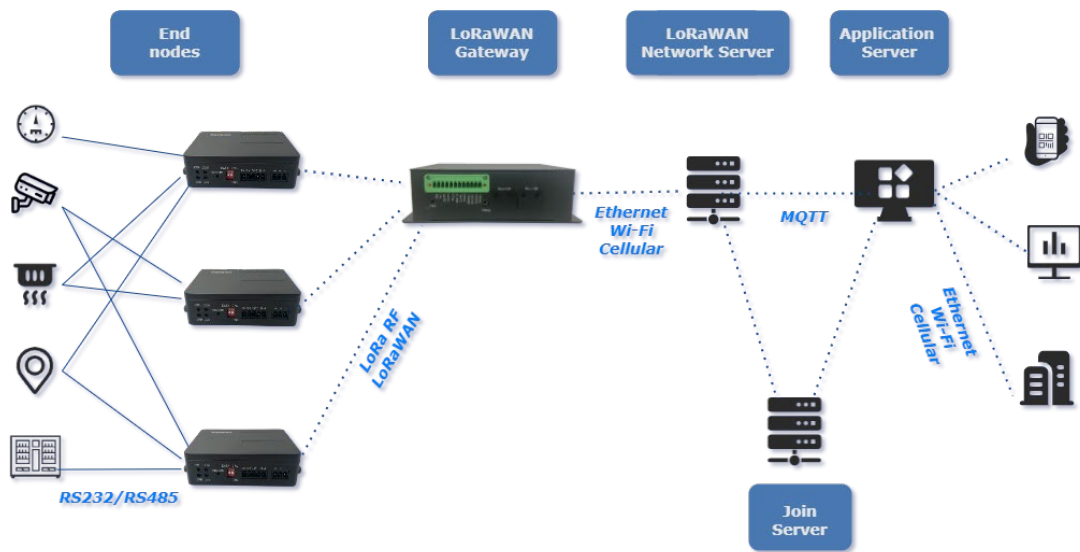


VT-M2M-DTU-LoRa	
	Dual COM & LoRa for data communication
	Ultra-low power consumption
	Long range, high sensitivity
	Efficient fanless heat dissipation
	Wide input voltage & temperature range
	High reliability design (MTBF > 30,000H)
	Vanity free, easy to deploy

**VT-M2M-DTU-LoRa Industrial DTU Datasheet**

VT-M2M-DTU-LoRa		
<b>Communication</b>	Wired	RS232/RS485
	Wireless	LoRa
<b>LoRa Features</b>	Frequency	915MHz
	Transmit power	15dBm ~ 22dBm
	Data rate	0.3~5.5kbps
	Receive sensitivity	-148dBm (at 10.4kHz, spreading factor 12)
	Transmission distance	1km (indoor)
	Antenna impedance	50Ω
<b>I/Os</b>	Serial port	1 x RS232 for data communication, device configuration & debug (115200, 8N1) 1 x RS485 for data communication (115200, 8N1)
	DIP switch	2 x DIP switch for RS232 (Data mode: switch 1 up; Config mode: switch 1 down, switch 2 up; Debug mode: switch 1 down, switch 2 down)
	Antenna	1 x LoRa antenna
	LED indicator	1 x Power indicator 1 x Error indicator 1 x Serial port status indicator 1 x LoRa communication indicator
Button	1 x Restore button (1~5s: Restart the device; > 5s: Factory reset)	
<b>Mechanical</b>	Enclosure	Plastic
	Dimensions	110mm x 73mm x 28mm (including the mounting brackets)
	MTBF	> 30,000H
	Installation	Wall mounting
	IP rating	IP30
<b>Power</b>	Input	9V~36V DC 1 x Power terminal (3-pin, 3.81mm)
	Consumption	< 3W (load)
<b>Software</b>	Configuration tool	VT Dtool
	Southbound protocol	Modbus
	Northbound protocol	MQTT
<b>Environment Condition</b>	Temperature	Operating: -20°C ~ +70°C Storage: -40°C ~ +85°C
	Humidity	Operating: 5%-95% RH (Non-condensing)
	EMC level	EMC Level 3
	Certification	FCC, ISED, CE

**Application Topology**



**Use Cases**



**Cold Chain Logistics**  
Temperature monitoring in transit



**Water Conservation**  
Leak identification, water quality tracking



**Smart Farm**  
Soil moisture monitoring, irrigation schedule





**Public Safety**  
Instant emergency alarm, report of user location

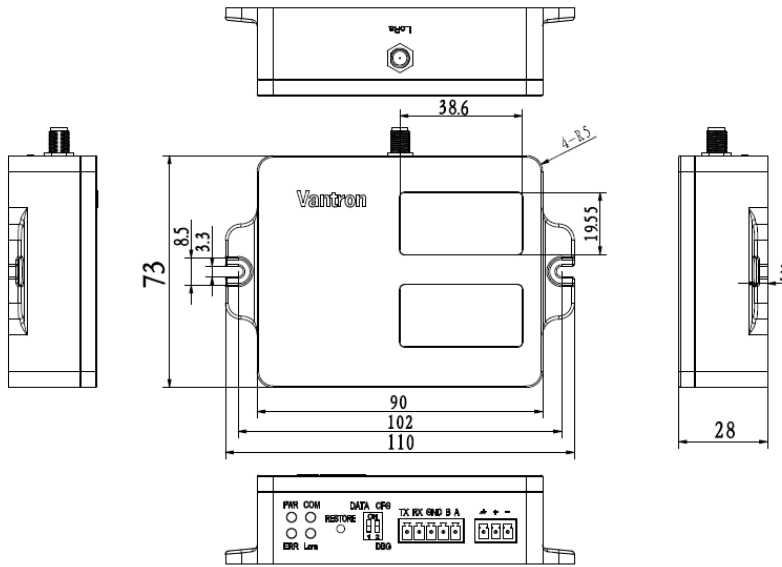


**Smart Building**  
Motion detection, fire/smoke level monitoring



**Patient tracking**  
Health data transfer, patient positioning

## Product Outlines



## Ordering Information

Ordering No.	Serial port	LoRa antenna	Voltage	Mounting brackets
VT-M2M-DTU-LoRa	RS232 & RS485	Yes	9V~36V	Yes

Packing list	
VT-M2M-DTU-LoRa industrial DTU	1
LoRa antenna (rubber stick)	1
12V 1A DC power adapter & power cord	1 kit
DC power connector	1
Serial port terminal connector	1

Optional accessory	
LoRa antenna (magnetic sucker)	1

Since its establishment in 2002 by two Silicon Valley entrepreneurs, Vantron Technology has been at the forefront of the connected IoT devices and IoT platform solutions. Today, Vantron boasts a global customer base that includes Fortune Global 500 companies. Its product lines cover edge intelligent hardware, IoT communication devices, industrial displays and BlueSphere cloud device management platform.

Vantron offers IoT communication devices that enable multi-protocol connections for industrial equipment and local data processing through edge computing. With abundant wired and wireless connectivity options, remote operations and maintenance have become easier than ever. Such devices can be deployed across different sectors such as smart retail, medical and warehousing. Moreover, Vantron's IoT solutions are designed to facilitate enterprises' digital transformation, streamline operations, enhance productivity, etc.